

1:20,000 RECONNAISSANCE FISH AND FISH HABITAT INVENTORY

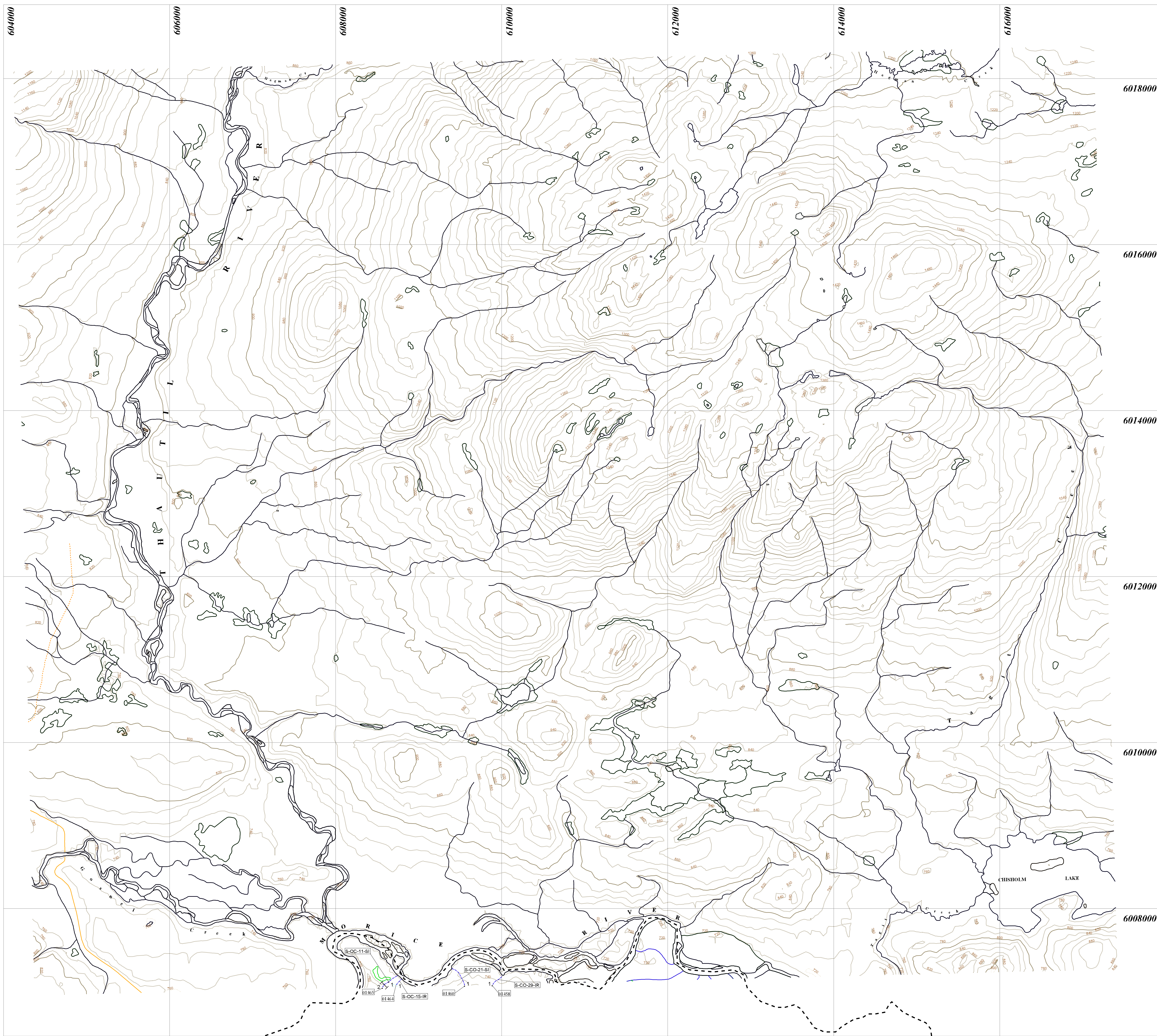
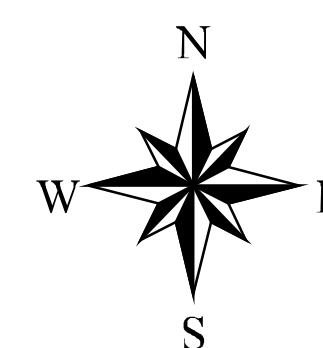
MORICE RIVER
460-600600-
UPPER MORICE RIVER PLANNING AREA
FISHERIES / PROJECT MAP
NORTHWOOD PULP AND TIMBER
MORICE FOREST DISTRICT
1999

MAPSHEET# 093L024 Map 1 of 15

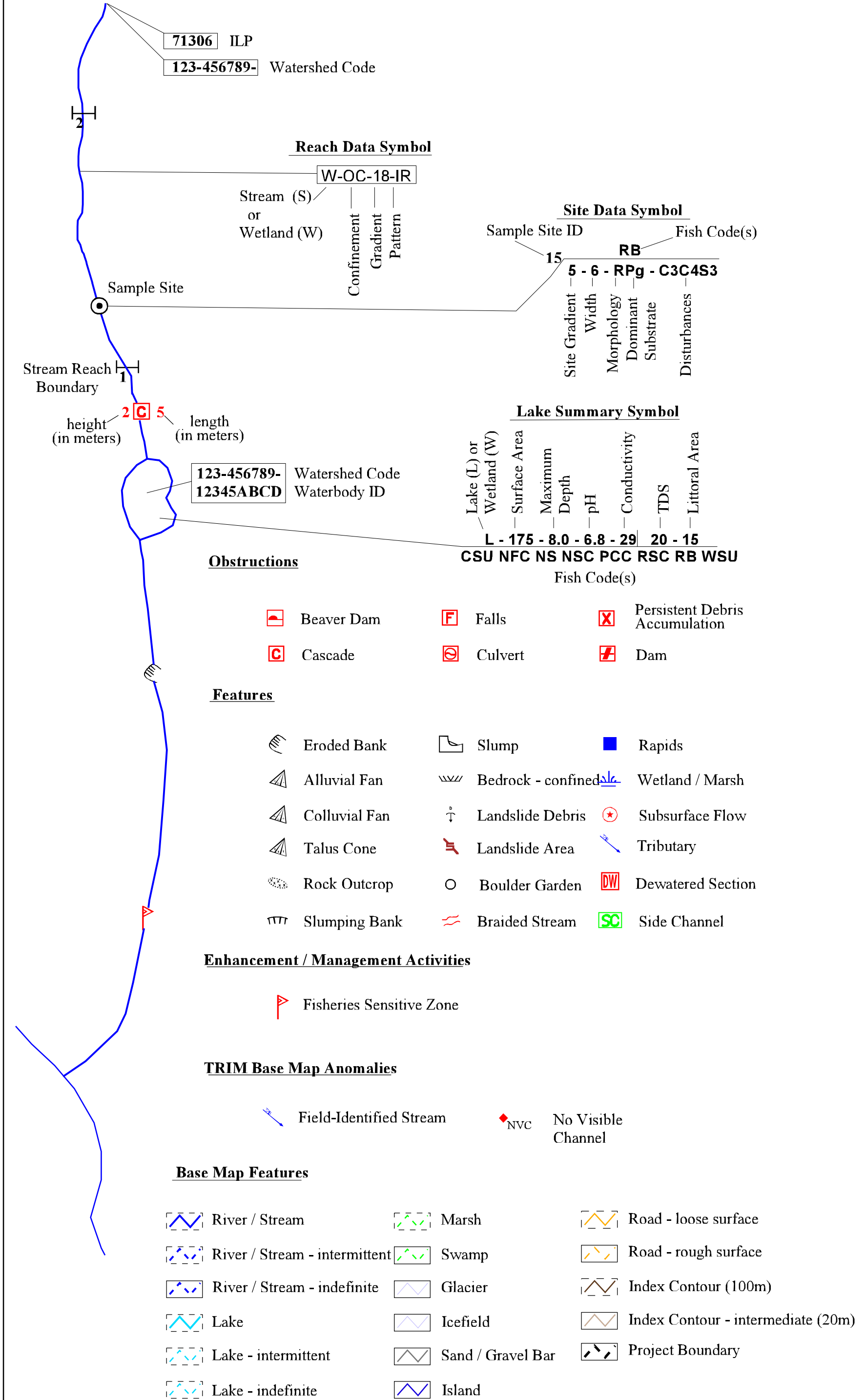
1000 0 1000 2000 Meters

Scale: 1:20,000
Contour Interval (20m) Projection UTM

Date: 2000/03/24 (yyyy/mm/dd)

Company: EL of TRITON
Environmental Consultants Ltd.

STREAM INFORMATION SUMMARY

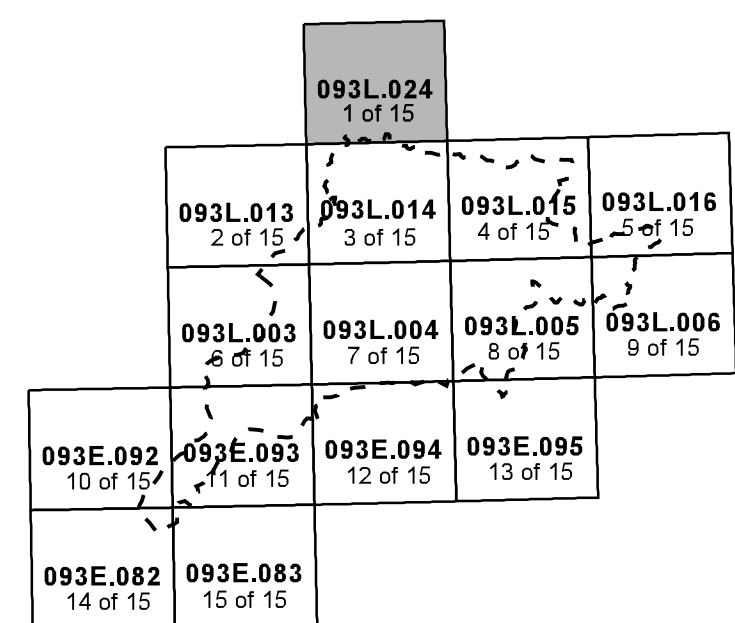


FISH SPECIES

CODE	DESCRIPTION	CODE	DESCRIPTION
NPC	No Fish Caught	LNC	Longnose Dace
NS	Not Sampled	LSU	Longnose Sucker
BB	Brook Trout	LT	Lake Trout
BT	Bull Trout	LW	Lake Whitefish
CAL	Cosmopolitan Sculpin	MW	Mountain Whitefish
CAS	Pickled Sculpin	PCC	Pearmouth Chub
CH	Chinook Salmon	PI	Pacific Lamprey
CO	Coho Salmon	RB	Rainbow Trout
CSU	Large-scale Sucker	RSC	Redside Shiner
CT	Cutthroat Trout	SK	Sockeye Salmon
DY	Dolly Varden	ST	Steelhead
L	Lamprey	SIU	Sucker
LKC	Lake Chub	WSU	White Sucker

Source: MELP

PROJECT STUDY AREA BOUNDARY



INVENTORY SOURCE INFORMATION CODES

CODE	DESCRIPTION	CODE	DESCRIPTION	CODE	DESCRIPTION	CODE	DESCRIPTION	CODE	DESCRIPTION
BASE	Base Map	LK SYM	Lake Symbol	APP	Aerial Photography	AP	Aerial Photography	INV/MGNT	Group persons rep for conducting inventory
TRIM	1:20,000 TRIM Maps	INV	Field Inventory	VIN	Video, Approximate	VID	Video	MELP	Ministry of Environment, Lands & Parks
OTM	Other Map Source	SS	Summary	CVC	Video, Corrected	OTM	Other	MOF	Ministry of Forests
STR SYM	Stream Symbol	OTH	Other	OTH	Other	OTH	Other	OSC	Geological Survey of Canada
INV	Field Inventory	LOC	Location Information	INV	Field Inventory	SS	Summary	OTH	Other
SS	Summary	PDE	Field Estimate	SS	Summary	N/A	Not Applicable	DATE INV	Date of Inventory
N/A	Not Applicable	PDI	Field GPS	N/A	Not Applicable	OTH	Other		
OTH	Other	APP	Aerial Photo, Estimate	OTH	Other				

STREAM SUMMARY SYMBOL INFORMATION

CODE	DESCRIPTION	CODE	DESCRIPTION	CODE	DESCRIPTION	CODE	DESCRIPTION
AB Features/Characteristics		Channel Pattern		bed		Banks	
NS	Not specified	TM	terminal meanders	e	cobble	B1	abandoned channels
REACH CHARACTERISTICS		IM	irregular meanders	bedrock blocks, etc		B2	standing banks
Confinement		ME	regular meanders	Morphology		B3	vertical banks
EC	entrenched	CP	constricted pool	RP	rolls pool	Morphology	
CO	confined	SP	shallow pool	OC	occasionally confined	Sedimentation	
PE	equally confined	OC	occasionally confined	UN	unconfined	S1	hemispherical bed sections
UN	unconfined	CHANNEL MORPHOLOGY		NA	not applicable	S2	subglacial fingers
NA	not applicable	Demand Substrate		DISTURBANCES		S3	extensive wedges
		OC	occasionally confined	OC	occasionally confined	S4	clastic wedges
		UN	unconfined	OC	occasionally confined	S5	extensive sand ripples
		NA	not applicable	OC	occasionally confined	S6	extensive sand ripples
		NA	not applicable	OC	occasionally confined	S7	extensive sand ripples
		NA	not applicable	OC	occasionally confined	S8	extensive sand ripples
		NA	not applicable	OC	occasionally confined	S9	extensive sand ripples
		NA	not applicable	OC	occasionally confined	S10	extensive sand ripples
		NA	not applicable	OC	occasionally confined	S11	extensive sand ripples
		NA	not applicable	OC	occasionally confined	S12	extensive sand ripples
		NA	not applicable	OC	occasionally confined	S13	extensive sand ripples
		NA	not applicable	OC	occasionally confined	S14	extensive sand ripples
		NA	not applicable	OC	occasionally confined	S15	extensive sand ripples
		NA	not applicable	OC	occasionally confined	S16	extensive sand ripples
		NA	not applicable	OC	occasionally confined	S17	extensive sand ripples
		NA	not applicable	OC	occasionally confined	S18	extensive sand ripples
		NA	not applicable	OC	occasionally confined	S19	extensive sand ripples
		NA	not applicable	OC	occasionally confined	S20	extensive sand ripples
		NA	not applicable	OC	occasionally confined	S21	extensive sand ripples
		NA	not applicable	OC	occasionally confined	S22	extensive sand ripples
		NA	not applicable	OC	occasionally confined	S23	extensive sand ripples
		NA	not applicable	OC	occasionally confined	S24	extensive sand ripples
		NA	not applicable	OC	occasionally confined	S25	extensive sand ripples
		NA	not applicable	OC	occasionally confined	S26	extensive sand ripples
		NA	not applicable	OC	occasionally confined	S27	extensive sand ripples
		NA	not applicable	OC	occasionally confined	S28	extensive sand ripples
		NA	not applicable	OC	occasionally confined	S29	extensive sand ripples
		NA	not applicable	OC	occasionally confined	S30	extensive sand ripples
		NA	not applicable	OC	occasionally confined	S31	extensive sand ripples
		NA	not applicable	OC	occasionally confined	S32	extensive sand ripples
		NA	not applicable	OC	occasionally confined	S33	extensive sand ripples
		NA	not applicable	OC	occasionally confined	S34	extensive sand ripples
		NA	not applicable	OC	occasionally confined	S35	extensive sand ripples
		NA	not applicable	OC	occasionally confined	S36	extensive sand ripples
		NA	not applicable	OC	occasionally confined	S37	extensive sand ripples
		NA	not applicable	OC	occasionally confined	S38	extensive sand ripples
		NA	not applicable	OC	occasionally confined	S39	extensive sand ripples
		NA	not applicable	OC	occasionally confined	S40	extensive sand ripples
		NA	not applicable	OC	occasionally confined	S41	extensive sand ripples
		NA	not applicable	OC	occasionally confined	S42	extensive sand ripples
		NA	not applicable	OC	occasionally confined	S43	extensive sand ripples
		NA	not applicable	OC	occasionally confined	S44	extensive sand ripples
		NA	not applicable	OC	occasionally confined	S45	extensive sand ripples
		NA	not applicable	OC	occasionally confined	S46	extensive sand ripples
		NA	not applicable	OC	occasionally confined	S47	extensive sand ripples
		NA	not applicable	OC	occasionally confined	S48	extensive sand ripples
		NA	not applicable	OC	occasionally confined	S49	extensive sand ripples
		NA	not applicable	OC	occasionally confined	S50	extensive sand ripples
		NA	not applicable	OC	occasionally confined	S51	extensive sand ripples
		NA	not applicable	OC	occasionally confined	S52	extensive sand ripples
		NA	not applicable	OC	occasionally confined	S53	extensive sand ripples
		NA	not applicable	OC	occasionally confined	S54	extensive sand ripples
		NA	not applicable	OC	occasionally confined	S55	extensive sand ripples
		NA	not applicable	OC	occasionally confined	S56	extensive sand ripples
		NA	not applicable	OC	occasionally confined	S57	extensive sand ripples
		NA	not applicable	OC	occasionally confined	S58	extensive sand ripples
		NA	not applicable	OC	occasionally confined	S59	extensive sand ripples
		NA	not applicable	OC	occasionally confined	S60	extensive sand ripples
		NA	not applicable	OC	occasionally confined	S61	extensive sand ripples
		NA	not applicable	OC	occasionally confined	S62	extensive sand ripples
		NA	not applicable	OC	occasionally confined	S63	extensive sand ripples
		NA	not applicable	OC	occasionally confined	S64	extensive sand ripples
		NA	not applicable	OC	occasionally confined	S65	extensive sand ripples
		NA	not applicable	OC	occasionally confined	S66	extensive sand ripples
		NA	not applicable	OC	occasionally confined	S67	extensive sand ripples
		NA	not applicable	OC	occasionally confined	S68	extensive sand ripples
		NA	not applicable	OC	occasionally confined	S69	extensive sand ripples
		NA	not applicable	OC	occasionally confined	S70	extensive sand ripples
		NA	not applicable	OC	occasionally confined	S71	extensive sand ripples
		NA	not applicable	OC	occasionally confined	S72	extensive sand ripples
		NA	not applicable	OC	occasionally confined	S73	extensive sand ripples
		NA	not applicable	OC	occasionally confined	S74	extensive sand ripples
		NA	not applicable	OC	occasionally confined	S75	extensive sand ripples
		NA	not applicable	OC	occasionally confined	S76	extensive sand ripples
		NA	not applicable	OC	occasionally confined	S77	extensive sand ripples
		NA	not applicable	OC	occasionally confined	S78	extensive sand ripples
		NA	not applicable	OC	occasionally confined	S79	extensive sand ripples
		NA	not applicable	OC	occasionally confined	S80	extensive sand ripples
		NA	not applicable	OC	occasionally confined	S81	extensive sand ripples
		NA	not applicable	OC	occasionally confined	S82	extensive sand ripples
		NA	not applicable	OC	occasionally confined	S83	extensive sand ripples
		NA	not applicable	OC	occasionally confined	S84	extensive sand ripples
		NA	not applicable	OC	occasionally confined	S85	extensive sand ripples
		NA	not applicable	OC	occasionally confined	S86	extensive sand ripples
		NA	not applicable	OC	occasionally confined	S87	extensive sand ripples
		NA	not applicable	OC	occasionally confined	S88	extensive sand ripples
		NA	not applicable	OC	occasionally confined	S89	extensive sand ripples
		NA	not applicable	OC	occasionally confined	S90	extensive sand ripples
		NA	not applicable	OC	occasionally confined	S91	extensive sand ripples
		NA	not applicable	OC	occasionally confined	S92	extensive sand ripples
		NA	not applicable	OC	occasionally confined	S93	extensive sand ripples
		NA	not applicable	OC	occasionally confined	S94	extensive sand ripples
		NA	not applicable	OC	occasionally confined	S95	extensive sand ripples
		NA	not applicable	OC	occasionally confined	S96	extensive sand ripples
		NA	not applicable	OC	occasionally confined	S97	extensive sand ripples
		NA	not applicable	OC	occasionally confined	S98	extensive sand ripples
		NA	not applicable	OC	occasionally confined	S99	extensive sand ripples
		NA	not applicable	OC	occasionally confined	S100	extensive sand ripples

BASE MAP INFORMATION

Projection: UTM

Datum: NAD83

UTM Zone: 9

SOURCE INFORMATION

BASE: TRIM STR SYM: INV

LOC: FDG LK SYM: N/A

HAB: INV

FISH: INV

DATE INV: 1999/09/01 INV MGNT: OTH

"This product has been accepted as being in accordance with approved standards within the limits of Ministry quality assurance procedures. Users are cautioned that interpreted information on this product developed for the purposes of the Forest Practices Code Act and Regulations, for example stream classifications, is subject to review by a statutory decision maker for the purposes of determining whether or not to approve an operational plan."